



DiamondDrive™

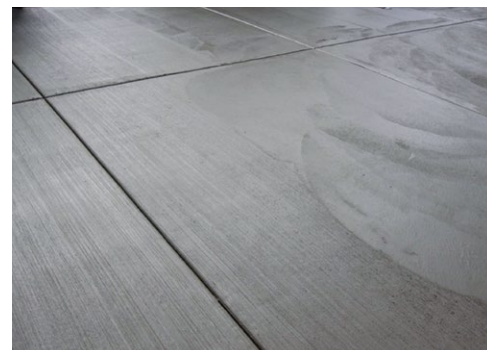
Beauty that Lasts

DiamondDrive, the exclusive premium driveway mix.

Well-designed homes deserve beautiful concrete driveways and walkways that will stand the test of time. The DiamondDrive exclusive premium driveway mix makes it possible—even in our challenging climate. DiamondDrive's unique Tri-Tech formula offers triple protection for driveways. Our blend of premium materials creates denser, more durable concrete with greater resistance to water penetration, cracking and popouts.



Prevent flaws that can hurt the look and performance of your driveway.



SUPERIOR STRENGTH

DiamondDrive delivers the 32 MPa compressive strength specified by CSA for home builders working in our climate.

BUILT-IN RESISTANCE TO CRACKS AND POP-OUTS

DiamondDrive's design prevents flaws that compromise the look and performance of most concrete driveways.

RESISTS MOISTURE AND CHEMICALS FROM DAY ONE

Unlike standard concrete, DiamondDrive gives the concrete protection similar to sealed concrete from day one, protecting the driveway from damage during the first year of service. Sealer applied by the homeowner is recommended before the second winter to keep the driveway in ideal shape.

DURABILITY

DiamondDrive is designed for a long service life with minimal maintenance, yielding a lowered life cycle cost.

EASE OF PLACEMENT

Formulated for 125mm slump, DiamondDrive places and finishes as easily as standard concrete with no additional steps or tools required.

SPECS:

- Strength – 32 MPa @ 28 days (conforming to CSA specifications)
- Air Entrainment – 5%–8%
- Slump – 120 +/-30mm
- W/C ratio – .45
- Optional enhancements – retarder, accelerator

PLACING AND FINISHING REQUIREMENTS:

- Normal concrete placing and finishing practices
- Adding water to the mix will compromise the strength and durability of Diamond Drive and is strongly discouraged
- Diamond Drive should be placed between April 1st and October 31st (If placement is needed beyond these dates, consult our technical staff)
- Additional sealing recommended after the first year of service or when beading stops



Long-lasting beauty with minimal maintenance.

